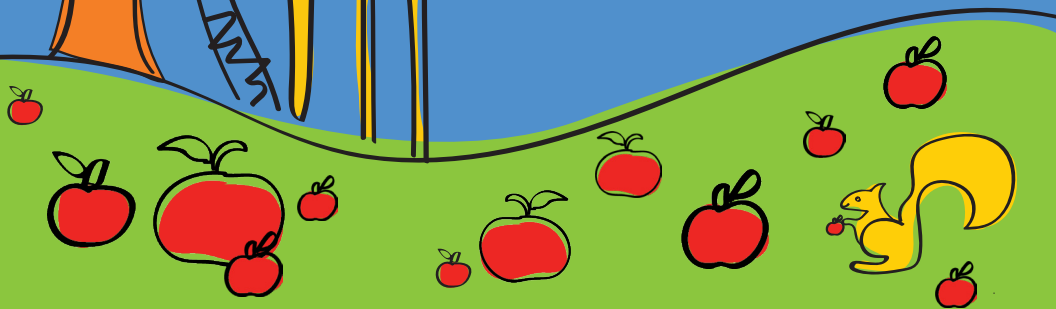




When you give to the Annual Fund, your generosity makes a big impact.



**E**very gift has impact at MSD. From creating extraordinary learning experiences for students to keeping up our incredible campus, every single gift impacts the young minds at MSD and propels them into the future with a love of learning and a sense of discovery.

**Did you know that we need 100% of our families to give to the Annual Fund to help us close the gap each year?**

As with all independent schools, tuition does not cover the full cost of educating a student and operating our school. The gap between what you pay for tuition and our operating expenses is \$1,500 per student this year. We count on everyone to give to help our school be the best it can be.



**T**he more you know about how we use your support, the prouder you'll be of giving to the Annual Fund. Our Annual Fund goal is \$210,000 this year, and here's the inside scoop on where your gift can take us:



### Technology (\$25,000)

Preparing our students for a technology-driven world requires everything from Zoom accounts to iPads®, keeping us all plugged in and ready for big thinking.

### Tuition Adjustment (\$50,000)

Three cheers for making everyone feel welcome and giving the opportunity of an MSD education to tons of amazing kids. This is what makes our community great.



### Montessori Materials (\$25,000)

Every classroom at MSD is filled with incredible, unique, Montessori materials that serve as teaching tools. This fund helps us maintain and add to our treasured learning resources.



### Montessori Experiences (\$25,000)

We are so proud of all the ways we bring the world to our students through field trips, speakers, community gatherings, and more. This fund makes sure they are always discovering and exploring the world beyond our campus.



### Professional Development (\$30,000)

Our teachers are passionate learners and that translates into incredible classrooms. This fund helps support them as they attend cool webinars, workshops, and conferences. Yay, teachers!!



### General Fund (\$30,000)

This important fund is there for whatever pops up and needs our attention. It is an awesome way to make sure we have resources to make every day at MSD something great.



### Facilities (\$25,000)

Our fantastic campus is part of what makes MSD so unique, from the Art Barn to Science Tower to the Treehouse. This fund makes sure we keep up all our spaces, inside and out.

Remember to support MSD on Colorado Gives Day on Tuesday, December 6, 2022 by visiting [coloradogives.org](https://coloradogives.org).

After December 6, 2022, please make a gift online at [montessoridenver.org](https://montessoridenver.org).



MONTESSORI  
School of Denver